

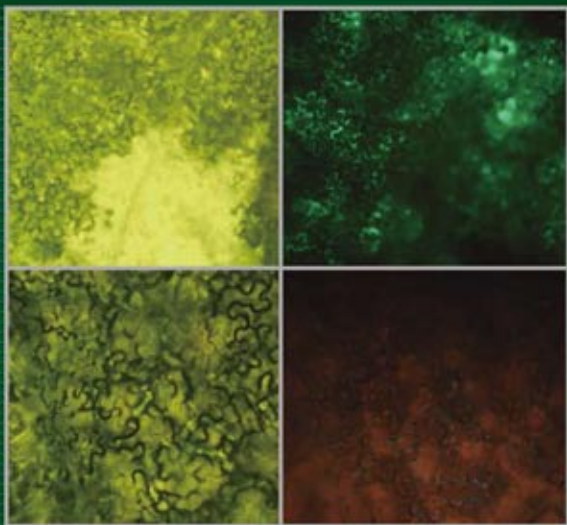


全国中文核心期刊  
CSCD核心库期刊

ISSN 1007-4333  
CODEN ZNDXAA

# 中国农业大学学报

JOURNAL OF CHINA  
AGRICULTURAL  
UNIVERSITY



菊花CmPIN1同源基因的克隆与表达分析

DOI:10.11841/j.issn.1007-4333.2016.03.09

Vol. 21 No. **3** 2016